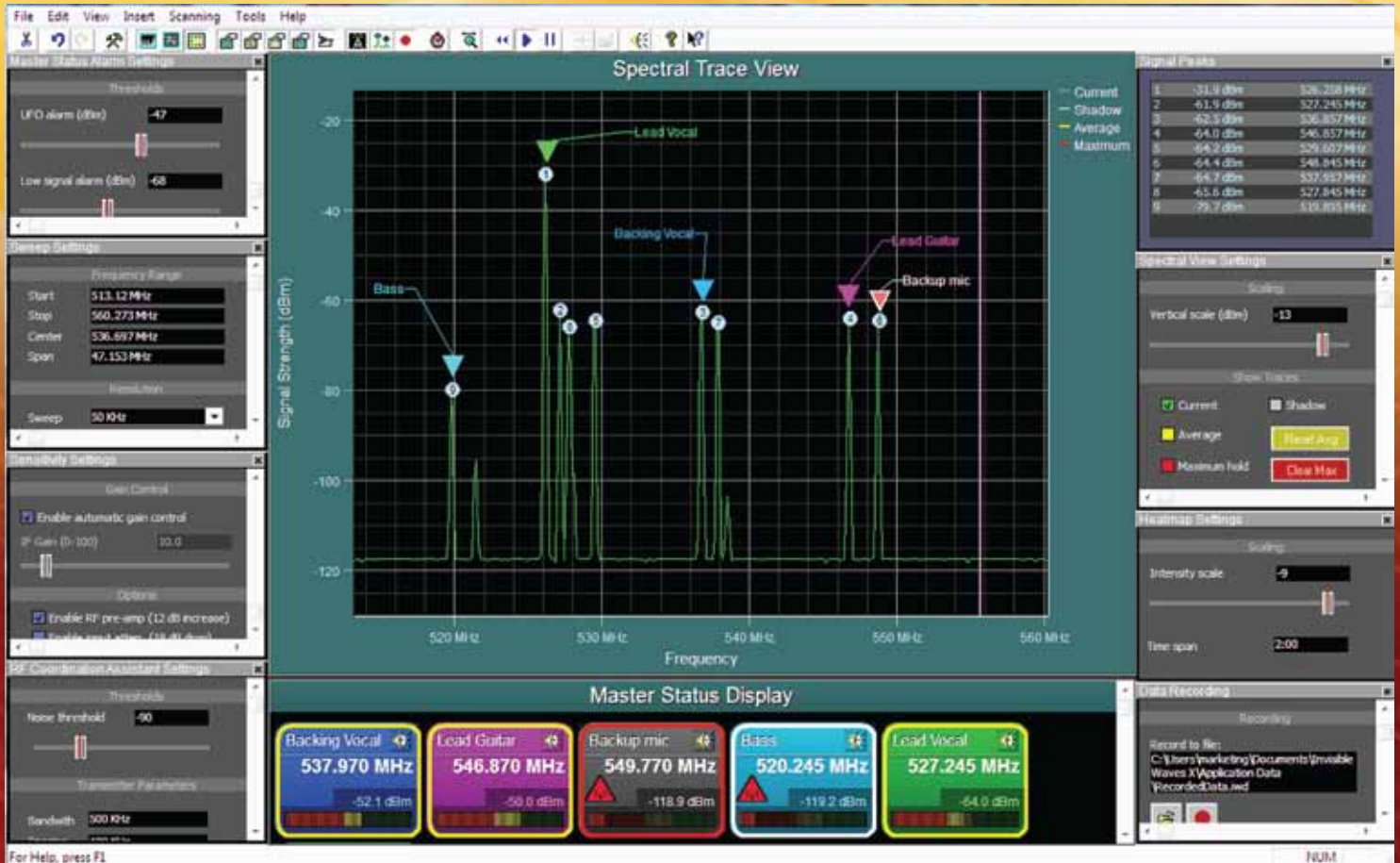


# the **standard** in analyzing **RF** for **pro audio wireless**



## Wireless Interference Solutions

**The next generation of the hot-selling Invisible Waves RF analyzer. New features include:**

- ⊗ RF Coordinator™ to identify usable open RF space
- ⊗ UFO Alert™ (Unidentified Frequency Objects) to warn of rogue interference
- ⊗ Click to Listen™ to listen in to all RF signals
- ⊗ RF Level Alert™ to warn when any cataloged signals fall below assigned thresholds
- ⊗ RF Congestion Scale™ to gauge the severity of local RF

...and many more



# RF Command Center™

The powerful RF Command Center™ analyzer sets-up, monitors and manages your wireless microphones, in-ear monitors, intercom, remote control, security, access control, etc. at live events.

## Screen Highlights

10 different control and alarm panels, each one 'dockable' or screen floating.

Visual and audible alarms for RF levels and rogue interference.

Custom Marker Point naming and color coding.

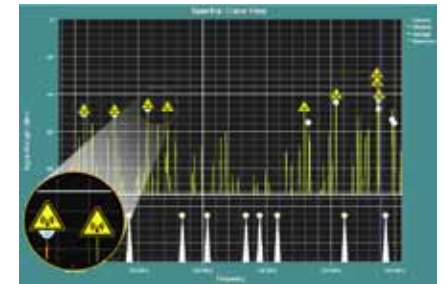
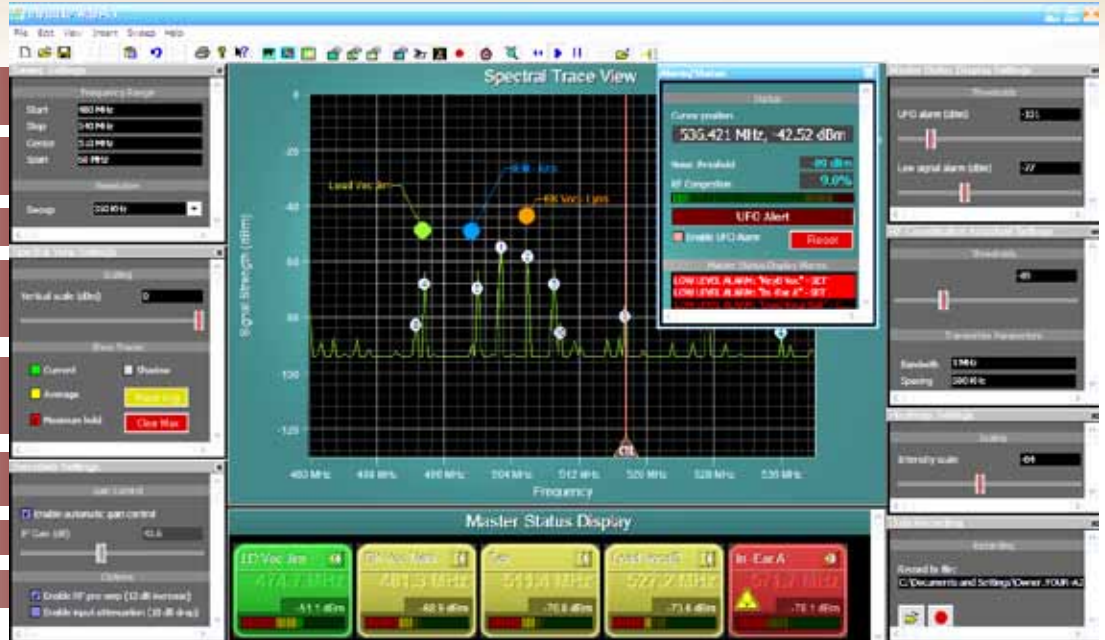
Click & Drag the RF traces (transmissions) right into the Master Status Display for continuous RF status monitoring.

Tunable Indicator Sweep Bar for the Click to Listen™ (CTL) function, (or click on the individual Speaker Icons in the Master Status Display).

Zoom in and out of the RF spectrum with the Click & Drag function

On screen activation of the cursor Help Assistant.

Unlimited levels of un-do's



**Master Status Display:** For cataloging up to 100 RF signals – transmitters and interference – for an instant status of RF signal levels, low-level alarms and Click to Listen™ (CTL). Each transmitter status panel changes color from green through red, depending on the signal level along with the dbm read-out.

**Click to Listen™:** Use the CTL™ tuning bar to listen-in to the transmitted audio or click on the related master status panel to monitor the audio signal.

**UFO Alert™:** ("Unidentified Frequency Object") flashes to indicate that an un-cataloged transmission has exceeded your assigned threshold level. UFO warnings appear in several places including the Spectral Trace View along with an audible alarm output.

## Master your wireless...

- Microphones
- In-ear monitoring
- Remote control
- Assisted listening
- Lighting control
- Security
- CCTV
- Live production site surveys
- Interference troubleshooting

## Applications...

- Concert touring
- Industrial production
- Church
- AV integration
- Event frequency coordination

## RF Command Center™ General Specifications\*

IWxLIVE™ 9KHz - 1.8GHz  
 IWxAV™ 9KHz - 3.5GHz  
 Level Range (typical): -130dbm to 0dbm  
 Filter Bandwidth: 1KHz - 50MHz  
 10PPM Frequency Stability

Accuracy (typical): +/- 3dB  
 PC Interfaces: Serial w/ serial/USB Adapter 2.0  
 Audio Output: Line-level, Mini stereo plug  
 Antenna Interface: 50 Ohm SMA  
 Receiver - DDS Based, Superheterodyne

\*Specifications subject to change without notice

## System Packages Include:

- Electronics / spectrum analyzer package
- AC adaptor / charger
- Broadband antennas
- Serial or USB to PC connection cable
- High-impact carrying case
- Optional smart LiPo rechargeable battery pack (4hrs)



\*IWxAV™ shown